

AMERICAN NURSE

November 2024 • Volume 19 • Number 11
MyAmericanNurse.com



EDITORIAL

4 Editorial

By Lillie Gelinas, Editor-in-Chief
Make high reliability an ongoing project that adapts to the ever-changing care environment.

FEATURES



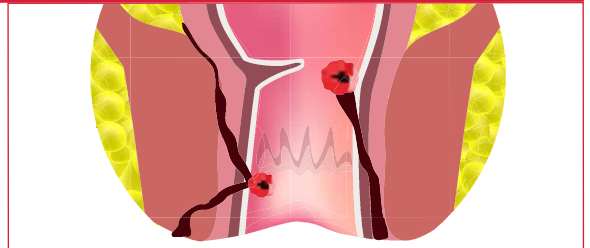
6 **CNE** Medication safety

By Kim Kuebler
Refresh your knowledge of the fundamentals to prevent adverse drug events.

24 Implicit bias: More than a buzzword

By Lois M. Lopez
When we acknowledge and work to overcome biases, we help to improve patient care for everyone.

STRICTLY CLINICAL



RAPID RESPONSE

14 Cystic fibrosis

By Megan Holland and Joanne Phillips
Good communication and a team approach ensure appropriate care.

44 Fistula management basics

By Kristen Benavides
Use this primer to help ensure you provide the best possible care.

LEADING THE WAY

FROM YOUR ANA PRESIDENT

22 Centered on nurses

By Jennifer Mensik Kennedy and Kathy Driscoll
Take advantage of the support the American Nurses Foundation offers nurses and their ideas.



PRACTICE MATTERS

15 ARDS and prone positioning

By Jennifer Rechter, Amanda Dauscher, and Kathleen M. Vollman

Do you, your colleagues, and your organization know how to implement this life-saving maneuver?

23 Anti-racism in nursing

By Marketa Houskova, Carter Todd, and Aron King
Consider these solutions to overcome what your workplace may lack.



American Nurse Journal (ISSN 2689-9272 [print], ISSN 2769-7584 [online]) is published monthly by HealthCom Media, Lantern Hill Business Park, 259 Veterans Lane, Suite 201, Doylestown, PA 18901. Printed in the U.S.A. Copyright © 2024 by HealthCom Media. All rights reserved. No part of this publication may be reproduced, stored, or transmitted in any form or by any means, electronic or mechanical, including photocopy, recording, or any information storage and retrieval system, with-

out permission in writing from the copyright holder. Periodicals Postage paid at Doylestown, PA and additional offices.

Postmaster: Send address changes to *American Nurse Journal*, Lantern Hill Business Park, 259 Veterans Lane, Suite 201, Doylestown, PA 18901.



Subscription information: Annual subscriptions: \$49.00 U.S.; \$59.00 Canada; \$71.00 outside U.S./Canada. Single copies: \$7 U.S.; \$15 outside U.S. Institutional subscriptions available by request. Digital-only subscription: \$14.97.

Reprints and back issues: Contact Chris Evans Gartley (Production Director) at 215-489-7000 or production@healthcommedia.com. Availability may be limited.

ETHICS INBOX

42 Asking for a change of assignment

By *Sophia Robinson-Harris*

Nurses can't choose who they care for.

VIEWPOINT

48 Thinking out loud

By *Maria W. O'Rourke*

Let patients hear your thinking process.

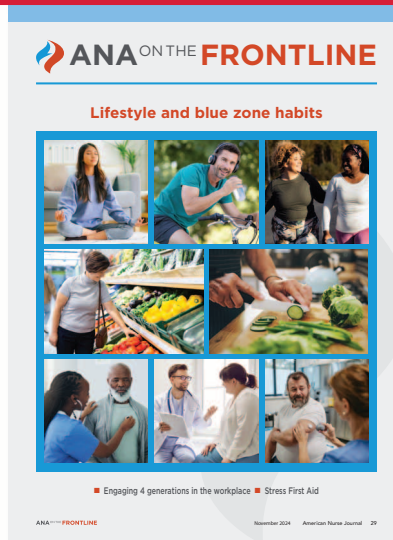
WEB EXCLUSIVE!

News & Notes

Access a round-up of clinical and practice news and alerts at myamericannurse.com/category/news



ANA ON THE FRONTLINE



WORKING SMARTER



37 Simulation: Preparing for workplace violence

By *Kimberly Andrews, Elizabeth Wyckoff, and Lenetra L. Jefferson*

This approach helps educators prepare students for potential violent patient encounters.

29 Learn about the top issues facing ANA member nurses, how ANA is working for you, and what ANA is doing to advance nursing.

FEATURE ARTICLE:

Mitigating obesity, depression, and dementia

COMING NEXT MONTH

- CNE – Living with atopic dermatitis
- New nurse orientation: A simple checklist guides the transition
- Can this marriage be saved? Nurses and health systems in crisis
- Unilateral DIEP flap: Reducing length of stay

Subscription Questions?

Christian Evans Gartley, Production Director
215.489.7004
cevangartley@healthcommedia.com

Change in Mailing Information?

To change your subscription information online, send request to Christian Evans Gartley, Production Director, at cevangartley@healthcommedia.com

Indexing

American Nurse Journal is indexed in the Cumulative Index to Nursing and Allied Health Literature.

Submit an Article

Please email Cheryl Mee, MSN, MBA, RN, FAAN, at cmee@healthcommedia.com. In the email, describe the topic of your proposed article and why it would be of interest to the readers of *American Nurse Journal*; include your name, credentials, employer, and phone number. We'll let you know if we're inter-

ested in the article you've proposed and can advise you on how to focus it. For more information, please refer to the Author Guidelines (MyAmericanNurse.com/author-guidelines).

Send a Letter to the Editor

Your input is vital in ensuring that *American Nurse Journal* is a valuable resource to your practice. You can email a Letter to the Editor at MyAmericanNurse.com/send-letter-editor.